



City of East Orange  
44 City Hall Plaza  
East Orange, NJ 07018

Presorted Standard  
U.S. Postage  
**PAID**  
Permit No. 7043  
Newark NJ

# Here's your new 2023 Solid Waste & Recycling Handbook!

\*\*\*\*\*ECRWSH\*\*C023

STANLEY HALL  
OR CURRENT RESIDENT  
54 S MAPLE AVE APT A  
EAST ORANGE, NJ 07018-4023



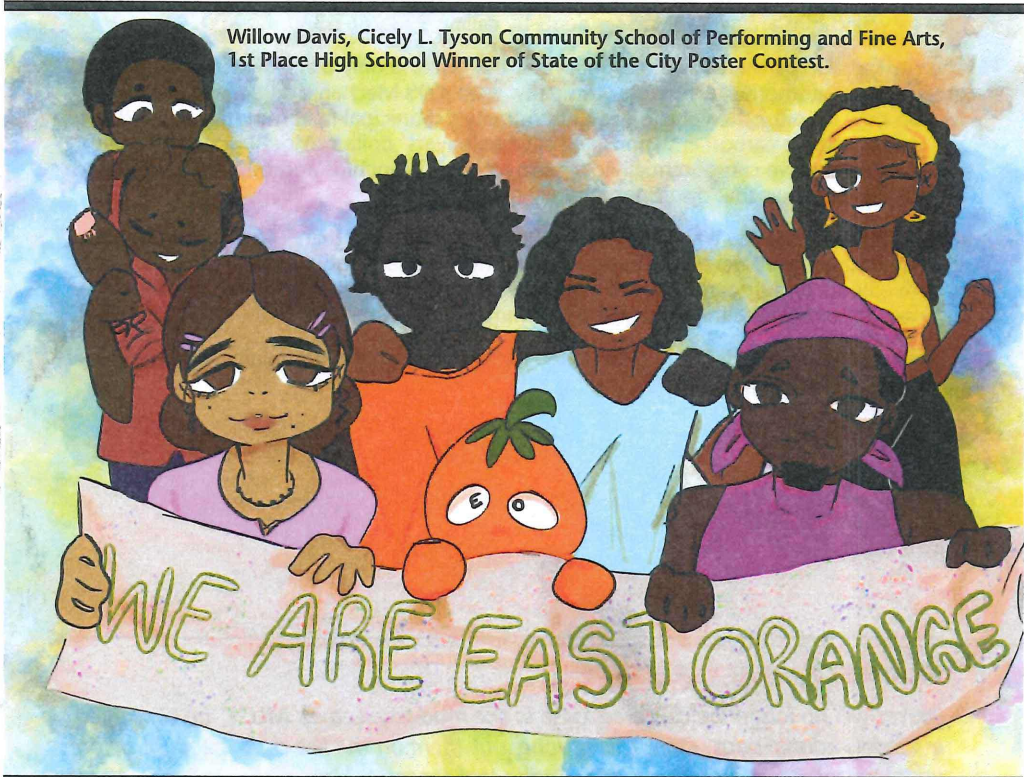
# 2023 SCHEDULE

# Solid Waste and Recycling Handbook



## THE CITY OF EAST ORANGE

Make Recycling part of your life!



Willow Davis, Cicely L. Tyson Community School of Performing and Fine Arts,  
1st Place High School Winner of State of the City Poster Contest.



Dear Residents:

Our Department of Public Works continues to work diligently on keeping our city clean and green.

Keeping our city clean, however, requires everyone to do their part. I am thankful to all of our volunteers who participated in our Spring and Fall Citywide Cleanups which incorporated our theme: "Talk Trash, Don't Throw It!" Both were extremely successful, and I encourage our residents and community partners to keep up the same momentum of ownership and pride all throughout the year.

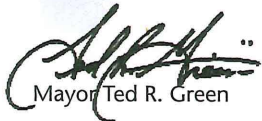
Protecting our environment is a critical global issue that we must all manage responsibly to ensure that vital natural resources are still available to us for generations to come. Small, daily actions like re-using recycled bags or recycling can make a significant difference. I am proud to boast that our recycling rate has increased from 39% to 46%, but I know we can do better. Free recycling bins are available to residents by calling 973.266.5330.

The city has also partnered with 4.0 Analytics, the first and only black-owned and operated green space automotive technology company. With 4.0's Mechanic on Board® technology, we can now monitor the vehicle health of our city's municipal fleet remotely, both doing our part to reduce carbon emissions and save taxpayers' dollars. More importantly, with fewer emissions, we can potentially decrease asthma, bronchitis and other health-related environmental issues that disproportionately plague our city.

As you look around, you'll also notice that we've planted more than 140 trees throughout the city, including 40 new trees in the newly-renovated Columbian Park. Plantings, street improvements and upcoming public art projects are just a few of the initiatives we are working on to revitalize the beauty of our community.

As we move into 2023, let us remain united as "One City, One Community, With One Goal and That Goal Equals Progress."

Sincerely,

  
Mayor Ted R. Green

### CHANGES IN LEAF COLLECTION

Leaves will no longer be collected loose in the roadway. Leaves **MUST** be contained in biodegradable bags. Once this is done, put them on the the curb the night before your leaf collection day. This is only during leaf season - November - January. All other times, they are bagged and put out as bulk trash.

- A. North Section - leaves will be picked up Thursday and Friday.
- B. Central Section - leaves will be picked up on Wednesday.
- C. South Section - leaves will be picked up on Monday and Tuesday.

**Reminder:**  
It's a crime to remove materials which have been placed at the curb for recycling!



Unleash the true potential of community recycling and make a positive impact. Download the Recycle Coach app to get official waste & recycling information from your local government.

- Personalized collection calendar and pick-up reminders
- What Goes Where material look-up tool
- Drop-off locations and local recycling events



### East Orange is a Recycle Coach Stage 3 Municipality

Most people are concerned about the environment and want to do the right thing. In fact, many think they already are doing what they can by recycling 'everything'. In the industry this is known as 'wish-cycling' and it is the number one contributor to a major problem called contamination.

Stage 3 means your local government is taking action to reduce contamination in your community. They have joined the Recycle Coach platform and are making sure you have the most accurate waste and recycling information possible.

## SHREDDING EVENTS

Please mark you calendars for the upcoming dates:

- February 4, 2023
- May 6, 2023
- August 12, 2023
- November 4, 2023



## NOTES

---

---

---

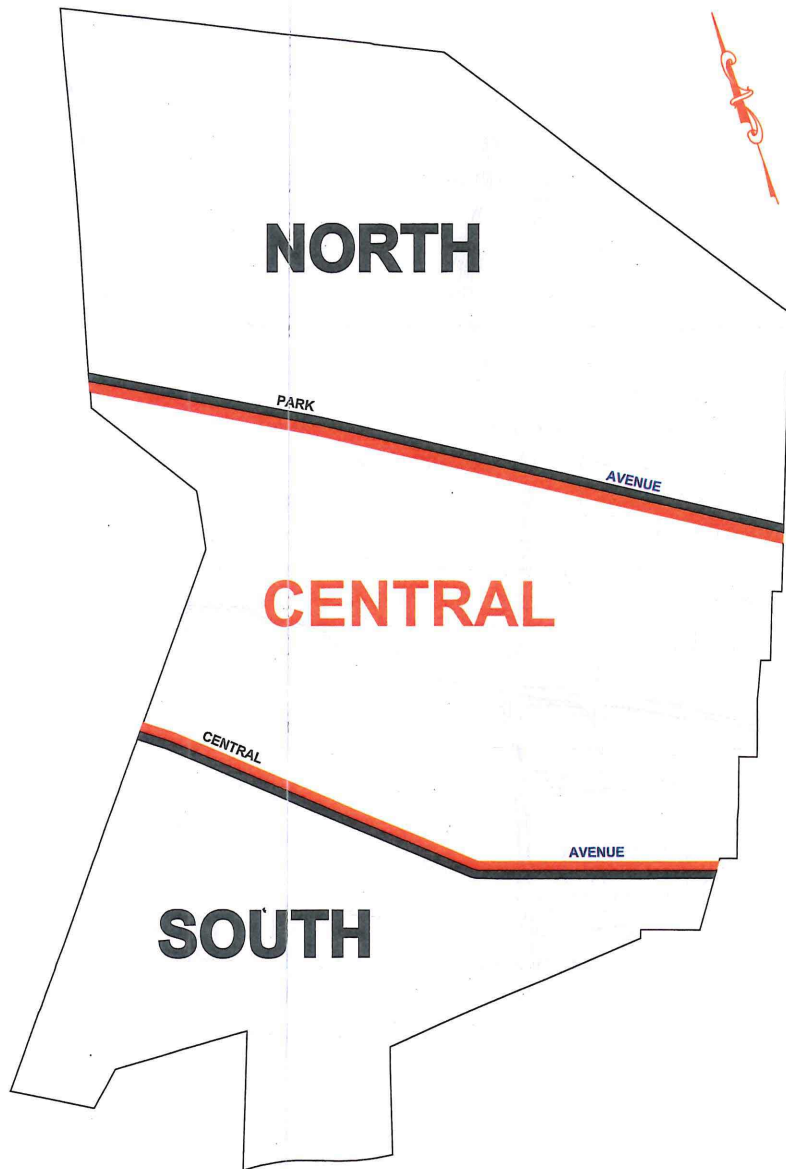
---

---

---

---

---



**LEGEND**

**NORTH:**  
 GARBAGE - MONDAY & THURSDAY  
 BULK TRASH - EVERY THURSDAY  
 RECYCLING - EVERY OTHER TUESDAY

**CENTRAL:**  
 GARBAGE - TUESDAY & FRIDAY  
 BULK TRASH - EVERY FRIDAY  
 RECYCLING EVERY OTHER WEDNESDAY

**SOUTH:**  
 GARBAGE - WEDNESDAY & SATURDAY  
 BULK TRASH - EVERY SATURDAY  
 RECYCLING - EVERY OTHER MONDAY

**GARBAGE**

Garbage is waste resulting from food preparation and other usual household functions, not: recyclables, bulky trash, appliances or scrap metal.

Garbage is picked up from the curb 2 times a week, not on certain holidays. If you do not know your garbage pick up days, refer to the street lists in this Handbook to find your section.

Do not place garbage for pick up prior to 5:00 p.m. the night before your scheduled pick up day.

Garbage should be in a can or plastic bag for pick up, not paper bags or boxes.

The City does not pick up any hazardous material, dirt, stones, concrete, bricks, tree stumps or logs.

For dead animals at the curb or in the roadway call (973) 266-5337

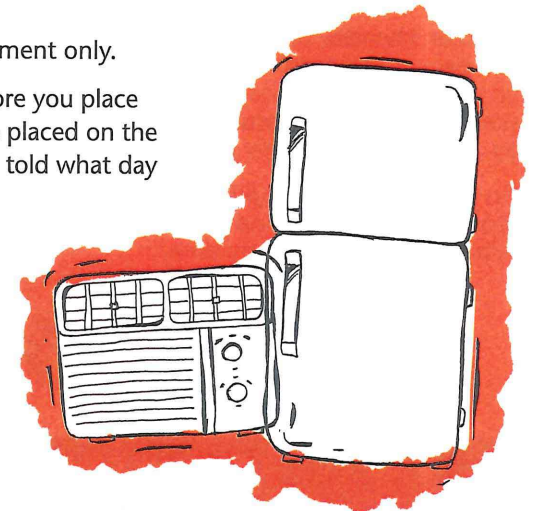


**TIRES, TELEVISIONS, COMPUTERS, ELECTRONICS, REFRIGERATORS, FREEZERS, AIR CONDITIONERS AND ALL OTHER APPLIANCES OR METALS**

All items above are by appointment only.

Please call (973) 266-5337 before you place them at the curb in order to be placed on the collection schedule. You will be told what day to place the items at the curb.

Remember to remove doors from refrigerators and freezers for safety.



Visit our website: [www.eastorange-nj.gov](http://www.eastorange-nj.gov)



### LIMIT ON BULK TRASH

A limit of 3 bulk items is all that we will collect on your bulk day. Bulk items consist of furniture, cabinets, mattresses, box springs, doors, screens, rolls of carpet (must be cut to 4 feet wide), bathroom fixtures, empty paint cans and similar items, as well as lawn and garden debris described below.

If in fact you have more than this 3 item limit, you CANNOT put it at the curb.

Scrap wood and branches (cut to 4 foot lengths and tied in no more than 3 bundles, that can be lifted by one person), is also bulky trash.

No need to call if you have bulky trash.

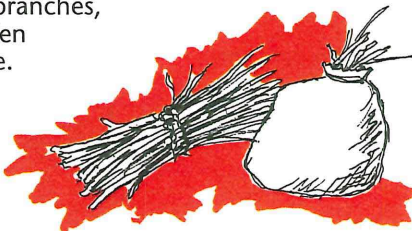
Keep bulky trash separate from your garbage when you place it for collection. Do not place bulky trash or garbage for pick up prior to 5:00 p.m. the night before your scheduled pick up day.



### LAWN AND GARDEN DEBRIS - 3 BAGS TOTAL

Branches 3 bundles, (cut to 4 feet long and tied) and lawn rakings (a maximum of 3 bags of construction debris, bag weight limit of 50 pounds will be accepted on your bulk garbage day). We do not collect dirt, stones, concrete, bricks, tree stumps or logs. Bulky trash & lawn and garden debris are collected every week by a separate truck. Refer to the street list to find your section and pick up day.

Do not place grass clippings, branches, bushes or other lawn and garden debris in the street at any time.



### FIND YOUR COLLECTION DAYS

To find your collection day for Garbage, Bulk Trash and Recycling, look on the following pages to find your street. Some streets are located in more than one area, so also check your address. When you find your address and street, the top of that page lists your collection days.

### EMERGENCY

POLICE

FIRE

AMBULANCE .....

# 911

For non-emergency calls to Police or Fire Departments, please use the following numbers:

Police..... 973-266-5000  
Fire..... 973-266-5500

---

Property Maintenance..... 973-266-5320

Building Department..... 973-266-5165

---

Health & Human Services Department/Animal Control..... 973-266-5480

Vital Statistics..... 973-266-5450

Animal Control..... 973-266-5109

---

Tax Assessor..... 973-266-5105

Tax Collector..... 973-266-5130

Senior Services..... 973-266-8832

Recreation & Cultural Affairs..... 973-414-4144

---

Municipal Court..... 973-266-5300

City Clerk..... 973-266-5110

Members of City Council..... 973-266-5120

Mayor's Office..... 973-266-5151

City Administrator..... 973-266-5310

---

Public Works Department

Sidewalk Permits..... 973-266-5330

Street Cleaning, Repairs & Trees..... 973-266-5330

Solid Waste & Recycling..... 973-266-5337

Clean & Green/Small Tools..... 973-266-5337 or 862-438-7182

---

Water-Sewer Department

To report a water line break or a sewer line backup:

Monday through Friday 8:30 AM to 4:30 PM..... 973-266-8869

After business hours and weekends ..... 973-379-3126, 973-266-5000

### KEEP POLLUTION OUT OF STORM DRAINS

- East Orange and many other public agencies are required to mark certain storm drain inlets with messages reminding people that storm drains are connected to local waterbodies.
- Do not let sewage or other wastes flow into a stormwater system.

### CLEAN UP AFTER YOUR PET

- East Orange has enacted and must enforce local pet-waste rules.
- An example is requiring pet owners or their keepers to pick up and properly dispose of pet waste dropped on public or other people's property.
- Use newspaper, bags or pooper-scoopers to pick up wastes.
- Dispose of the wrapped pet waste in the trash or unwrapped in a toilet.
- Never discard pet waste in a storm drain.



### DON'T FEED WILDLIFE

- Do not feed wildlife, such as ducks and geese, in public areas.
- East Orange and other public agencies enacted, and must enforce, a rule that prohibits wildlife feeding in these areas.

### DISPOSE OF YARD WASTE PROPERLY

- Keep leaves and grass out of storm drains.
- Follow yard waste collection rules.

### CONTACT INFORMATION

For more information on stormwater related topics, visit [www.njstormwater.org](http://www.njstormwater.org) or [www.nonpointsource.org](http://www.nonpointsource.org)

Additional information is also available at U. S. Environmental Protection Agency Web sites [www.epa.gov/npdes/stormwater](http://www.epa.gov/npdes/stormwater) or [www.epa.gov/nps](http://www.epa.gov/nps)

New Jersey Department of Environmental Protection  
Division of Water Quality  
Bureau of Nonpoint Pollution Control  
Municipal Stormwater Regulation Program (609) 633-7021

### Do not use plastic or paper bags for collections.

#### SINGLE STREAM

Single stream all recycling can be put in the same container.



#### NEWSPAPERS

All sections of the paper including magazine section.

#### CARDBOARD

Cardboard is recyclable, not garbage or bulk trash.



#### GLASS BOTTLES, JARS & METAL CANS

**Recyclable:** Food cans, baby food jars, pet food cans, mustard jars, soda cans, pickle bottles, beer cans/bottles, juice cans/bottles, liquor bottles, spray cans.

**Not Recyclable:** Window glass, dishes, drinking glasses, bulbs, paint cans, aluminum foil pans.

**Preparation:** Rinse, clean and place all colors of glass and metal mixed together in a sturdy reusable container large enough to hold all your glass, metal and plastic between collections.



#### PLASTIC BOTTLES

**Recyclable:** Soft drink bottles, milk, water, juice jugs, laundry detergents, bleach or softener bottles.

**Not Recyclable:** Yogurt cups, food storage tubs, motor oil bottles, plastic bags, toys.

**Preparation:** Rinse clean, crush or step on container, place in the same container as glass and cans.



#### RECYCLE...IT'S THE LAW

**Plastic and glass bottles, glass jars, cans and newspapers must be separate from garbage.**

Have a question? Call the Recycling Line at 973-266-5337.  
(TTY NJ Relay 1-800-852-7899)



The Clean & Green Environmental Education Center is open to help you develop a successful Clean Community Program. We have a wide variety of programs which are available to schools, churches and civic groups. These programs are designed to provide you or your group with the resources to make our city a clean community.

Our "Small Tool Library" is stocked with a wide array of tools. East Orange homeowners, residents and tenants may borrow these tools for small home improvement projects.



## GRASS, CUT IT & LEAVE IT PROGRAM

Grass clippings are a major part of Essex County's municipal solid waste stream, and like other highly recyclable materials—such as newspapers, plastics, glass and aluminum recycling grass clippings, can help reduce the amount of waste to landfills.

What can you do to help?  
It's real simple. Just leave your grass clippings on the lawn when you mow, or purchase a mulching mower.



## 2023 HOLIDAY SCHEDULE

New Years Day	January 1	Monday
Memorial Day	May 29	Monday
Independence Day (observed)	July 4	Tuesday
Labor Day	September 4	Monday
Thanksgiving	November 23	Thursday
Christmas Day (observed)	December 25	Monday

If your garbage, bulky trash or recyclables are usually collected on one of the days listed above, DO NOT place your garbage, bulky trash or recyclables out for collection.

## EASY THINGS YOU CAN DO EVERY DAY TO PROTECT OUR WATER

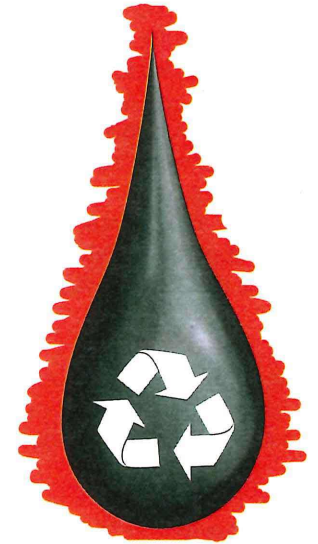
### A GUIDE TO HEALTHY HABITS FOR CLEANER WATER

Pollution on streets, parking lots and lawns is washed by rain into storm drains, then directly to our drinking water supplies and the ocean and lakes our children play in. Fertilizer, oil, pesticides, detergents, pet waste, grass clippings: You name it and it ends up in our water.

Stormwater pollution is one of New Jersey's greatest threats to clean and plentiful water, and that's why we're all doing something about it. By sharing the responsibility and making small, easy changes in our daily lives, we can keep common pollutants out of stormwater. It all adds up to cleaner water, and it saves the high cost of cleaning up once it's dirty.

As part of New Jersey's initiative to keep our water clean and plentiful and to meet federal requirements, East Orange and other public agencies, including colleges and military bases, have adopted ordinances or other rules prohibiting various activities that contribute to stormwater pollution. Breaking these rules can result in fines or other penalties.

As a resident, business, or other member of the East Orange community, it is important to know these easy things you can do every day to protect our water.



### LIMIT YOUR USE OF FERTILIZERS AND PESTICIDES

- Do a soil test to see if you need a fertilizer.
- Do not apply fertilizers if heavy rain is predicted.
- Look into alternatives for pesticides.
- Maintain a small lawn and keep the rest of your property or yard in a natural state with trees and other native vegetation that requires little or no fertilizer.
- If you use fertilizers and pesticides, follow the instructions on the label on how to correctly apply it. Make sure you properly store or discard any unused portions.

### PROPERLY USE AND DISPOSE OF HAZARDOUS PRODUCTS

- Hazardous products include some household or commercial cleaning products, lawn and garden care products, motor oil, antifreeze, and paints.
- Do not pour any hazardous products down a storm drain because storm drains are usually connected to local waterbodies and the water is not treated.
- If you have hazardous products in your home or workplace, make sure you store or dispose of them properly. Read the label for guidance.
- Use natural or less toxic alternatives when possible.
- Recycle used motor oil.



East Orange needs the help of all its residents to keep our sewer system running properly. Liquefied fat, oil or grease that is poured down the kitchen sink drain can cause serious impacts such as blocked pipes. If wastewater can't move freely through the pipes and out into the sewer system, it can back up into your home and can cause unsanitary conditions and expensive damage. By following the guidelines below, you can help avoid repeated repairs and unnecessary disruptions to residences and businesses.

### PROPERLY DISPOSE OF COOKING OIL AND GREASE

**DO NOT** pour cooking oil, poultry fat or grease into the kitchen sink or the toilet bowl.

**DO NOT** use hot tap water and soap to wash grease down the drain because it will cool and harden in your pipes or in the sewer down the line.

### INSTEAD

**DO** use paper towels to wipe residual grease or oil off dishes, pots and pans prior to washing them.



### RECYCLE USED MOTOR OIL

When poured down house or storm drains, motor oil may travel to your local stream, bay or harbor, where it can harm underwater vegetation and aquatic life. East Orange DPW will accept used motor oil at no charge. Remember not to mix your motor oil with any other substance. Please put your used oil in a sturdy container and take it to the Midland Yard located at 133 Midland Avenue for recycling.

### CONTACT US

For more information on disposal of motor oil and residential or commercial grease, or to report illegal dumping into street storm drains, call the Sanitation Division at 973-266-5337.



Bring them every Monday (see limit on items)  
Refrigerators/Freezers/AC's/Appliances/Metals/Tires/TVs  
Call (973) 266-5337 for pickup

1st Avenue	Entire	Hayward Street	Entire	North 23rd Street	Entire
4th Avenue	Entire	Hilton Street	Entire	North Arlington Avenue	209-545
Abington Avenue	Entire	Hoffman Boulevard	Entire	North Clinton Street	187-491
Ampere Parkway	Entire	Kearney Street	Entire	North Grove Street	286-639
Ampere Plaza	Entire	Kenmore Terrace	Entire	North Maple Avenue	261-620
Boyden Street	Entire	Kensington Place	Entire	North Oraton Parkway	268-375
Brighton Avenue	Entire	La France Avenue	Entire	North Park Street	Entire
Burchard Avenue	Entire	Lafayette Avenue	Entire	North Walnut Street	203-500
Charles Street	Entire	Lake Street	Entire	Olive Street	Entire
Chauncey Avenue	Entire	Laurel Avenue	Entire	Park Avenue	All Even
Centerway	Entire	Lawrence Street	Entire	Park Place	Entire
College Avenue	Entire	Lawton Street	Entire	Park Street	179-200
Cleveland Terrace	Entire	Leslie Street	Entire	Parkway Drive	Entire
Colonial Terrace	Entire	Lincoln Street	165-291	Prospect Street	160-559
Cottage Place	Entire	Linwood Place	Entire	Renshaw Avenue	Entire
Crescent Road	Entire	Little Street	Entire	Ridgewood Avenue	Entire
Division Street	Entire	Long Street	Entire	Roosevelt Avenue	Entire
Dodd Street	Entire	Madison Avenue	Entire	Rowe Street	Entire
Dodd Terrace	Entire	Marcy Avenue	Entire	Rutledge Avenue	Entire
East Park Street	Entire	Meadow Street	Entire	Sawyer Avenue	Entire
Eastwood Street	Entire	Midland Avenue	Entire	Schuyler Terrace	Entire
Edgerton Terrace	Entire	Monroe Avenue	Entire	Sherman Avenue	Entire
Edgewood Road	Entire	Morris Street	Entire	Sommer Avenue	Entire
Ellington Street	Entire	Morse Avenue	Entire	Soveral Terrace	Entire
Ely Place	Entire	Netherwood Terrace	Entire	Springdale Avenue	Entire
Everett Street	Entire	Newfield Street	Entire	Thomas Boulevard	Entire
Fair Street	Entire	Norman Place	Dead End	Thornton Place	Entire
Fernwood Road	Entire	Norman Street	Entire	Upsala Court	Entire
Franklin Street	Entire	North 15th Street	195-227	Warrington Place	Entire
Fulton Street	Entire	North 16th Street	153-195	Washington Street	105-219
Girard Avenue	Entire	North 17th Street	159-200	Warwick Street	Entire
Glen Park Road	Entire	North 18th Street	148-267	Westcott Street	Entire
Glenwood Avenue	94-502	North 19th Street	157-271	Whitman Avenue	Entire
Glenwood Place	Entire	North 20th Street	Entire	Whitney Place	Entire
Grant Avenue	Entire	North 21st Street	Entire	Woodland Avenue	Entire
Hamilton Street	Entire	North 22nd Street	Entire		

### 2023 RECYCLING

JANUARY	FEBRUARY	MARCH	APRIL
10 24	6 20	7 21	4 18
MAY	JUNE	JULY	AUGUST
2 16 30	13 27	11 25	9 23
SEPTEMBER	OCTOBER	NOVEMBER	DECEMBER
5 19	3 17 28	14 28	13 27

Visit our website: [www.eastorange-nj.gov](http://www.eastorange-nj.gov)





**Bulk Trash: Every Friday (see limit of 3 items)**  
 Refrigerators/Freezers/AC's/Appliances/Metals/Tires/TVs  
 Call (973) 266-5337 for pickup

9th Avenue	Entire	Hawthorne Avenue	Entire	Prospect Terrace	Entire
Amherst Street	17-158	Hillyer Street	Entire	Shepard Avenue	4-56
Ashland Avenue	Entire	Hollywood Avenue	78-159	South 16th Street	Entire
Baldwin Street	Entire	Lenox Avenue	Entire	South 17th Street	Entire
Beech Street	Entire	Lincoln Street	3-150	South Arlington Ave	21-158
Berwyn Street	Entire	Maple Terrace	Entire	South Burnet Street	11-186
Carlton Street	Entire	Melmore Gardens	Entire	South Clinton Street	8-190
Carnegie Avenue	Entire	Morton Place	Entire	South Grove Street	10-153
Central Avenue	All Even	Nassau Place	Entire	South Harrison Street	65-195
Chelsea Place	Entire	New Street	Entire	South Maple Avenue	Entire
Chestnut Street	Entire	North 14th Street	Entire	South Munn Avenue	15-87
Church Place	Entire	North 15th Street	4-170	South Oraton Parkway	Entire
City Hall Plaza	Entire	North 16th Street	2-133	South Walnut Street	Entire
Davis Avenue	Entire	North 17th Street	7-134N.	St Agnes Lane	Entire
Davis Place	Entire	North 18th Street	9-136	State Street	Entire
Division Place	Entire	North 19th Street	2-136	Steuben Street	Entire
Dr. M.L. King, Jr. Blvd	Entire	North Arlington Street	9-184	Stockton Place	Entire
Eaton Place	Entire	North Burnet Street	Entire	Summit Street	Entire
Essex Street	Entire	North Clinton Street	10-171	Sussex Avenue	Entire
Evergreen Place	Entire	North Grove Street	51-275	University Place	Entire
Freeway Drive East	Entire	North Harrison Street	Entire	Vernon Place	Entire
Glenwood Avenue	3-77	North Maple Avenue	47-233	Vernon Terrace	Entire
Greenwood Avenue	Entire	North Munn Avenue	Entire	Washington Street	22-99
Grove Place	Entire	North Oraton Parkway	50-247	Washington Terrace	Entire
Halsted Place	Entire	North Walnut Street	8-184	Webster Place	Entire
Halsted Street	12-202	Park Avenue	All Odd	William Street	Entire
Hampton Terrace	Entire	Park Street	150-168	Winans Street	Entire
Harvard Street	Entire	Prospect Street	7-131	Winthrop Terrace	Entire

## 2023 RECYCLING

JANUARY	FEBRUARY	MARCH	APRIL
11 25	8 22	8 22	5 19
MAY	JUNE	JULY	AUGUST
3 17 28	14 28	12 26	9 23
SEPTEMBER	OCTOBER	NOVEMBER	DECEMBER
6 20	4 18	1 15 29	13 27

Visit our website: [www.eastorange-nj.gov](http://www.eastorange-nj.gov)



**Bulk Trash: Every Saturday (see limit of 3 items)**  
 Refrigerators/Freezers/AC's/Appliances/Metals/Tires/TVs  
 Call (973) 266-5337 for pickup

11th Avenue	Entire	Garfield Place	Entire	Sanford Street	Entire
Amherst Street	181-420	Grand Avenue	Entire	Shepard Avenue	80-303
Arsdale Terrace	Entire	Halsted Street	228-536	South 18th Street	Entire
Ayr Street	Entire	Hawthorne Place	Entire	South 20th Street	Entire
Bedford Street	Entire	Hillcrest Terrace	Entire	South Arlington Avenue	190-254
Birchwood Avenue	Entire	Hollywood Avenue	172-229	South Burnet Street	210-369
Brookwood Street	Entire	Hudson Avenue	Entire	South Clinton Street	207-576
Cambridge Street	Entire	Irving Street	Entire	South Grove Street	172-218
Central Avenue	All Odd	Kenwood Place	Entire	South Harrison Street	207-440
Chelsea Avenue	Entire	Linden Avenue	Entire	South Munn Avenue	94-179
Clay Street	Entire	Lindsley Place	Entire	South Orange Avenue	Entire
Clifford Street	Entire	Madonna Place	Entire	Sunnyside Terrace	Entire
Crawford Street	Entire	McKay Avenue	Entire	Telford Street	Entire
Derby Street	Entire	Melrose Avenue	Entire	Tremont Avenue	Entire
E. Highland Avenue	Entire	Mountainview Avenue	Entire	Vanderbilt Place	Entire
Edgar Street	Entire	Norwood Place	Entire	Watson Avenue	Entire
Elliott Place	Entire	Norwood Street	Entire	Wayne Avenue	Entire
Elmwood Avenue	Entire	Oak Street	Entire	Whittier Street	Entire
Emerson Street	Entire	Park End Place	Entire	Whittlesey Avenue	Entire
Eppirt Street	Entire	Princeton Street	Entire	Wilcox Avenue	Entire
Fairmount Terrace	Entire	Rhode Island Avenue	Entire		
Freeman Avenue	Entire	Ross Street	Entire		

## 2023 RECYCLING

JANUARY	FEBRUARY	MARCH	APRIL
9 23	6 20	6 20	3 17
MAY	JUNE	JULY	AUGUST
1 15 29	12 26	10 24	9 23
SEPTEMBER	OCTOBER	NOVEMBER	DECEMBER
18	2 16 30	13 27	11

Visit our website: [www.eastorange-nj.gov](http://www.eastorange-nj.gov)